

CHAMPAGNE & SPARKLING WINES



elite
TO BE



Living Edge Showroom, Melbourne

About Elite To Be

Founded by Australian-born Franco and Carlo De Re and based in Friuli in northern Italy, Elite To Be produces furniture complements and design objects for home and hospitality applications. Each design is inspired by the form, colours and history of a place in Europe, the Americas, Africa or Asia that the duo particularly connected with in their extensive travels. This relationship with cultural artefacts forms the essence of the brand.

About Libreria Del Vino

Libreria Del Vino is part of the Wine To Be collection, designed by Franco De Re, and dedicated to the world of wine. Rethinking the concept of conviviality, the collection is designed to suit wine bars, restaurants and wineries, but also adapts easily to domestic environments.

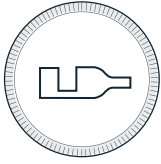
Libreria Del Vino is ideal for dressing the walls of bars and wine bars, kitchens or private wine cellars. The unique modular wine storage system features alcoves designed to accommodate differently sized wine bottles. Custom configurations can be simply achieved, and a sliding iron ladder provides easy access to high bottles. Made entirely from laser cut iron, the system can be finished in natural or lacquered corten or customised with powdercoat in a selection of six standard colours.

Sleek, space-efficient and visually arresting, Libreria Del Vino allows you to display wine labels and maintain free airflow with proper storage positioning.









Vini Divini Wine Lab, Sydney

At a time when people are craving connection and overseas holidays have been put on hold, Vini Divini Wine Lab is bringing people together to celebrate the simple pleasures.

The Brief

Philippe Gilbert, owner of Vini Divini Wine Lab, wanted to bring people together to celebrate the simple pleasures, spark conversations and transport oneself to the sweet life – 'la dolce vita' – with the opening of this small Mediterranean wine bar.

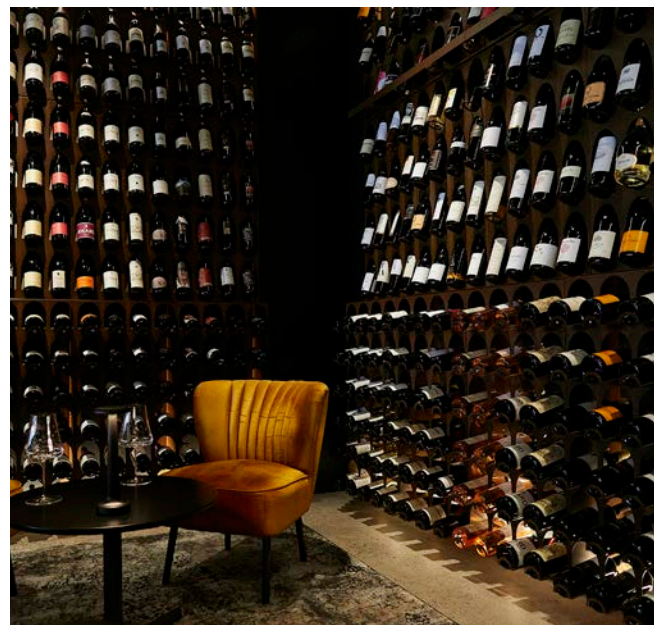
The Solution

Living Edge was proud to provide a custom solution for wine storage, the Libreria del Vino that was perfectly matched for the client in a burnished steel finish, made entirely of laser-cut iron corten, acting as an impressive ceiling to floor backdrop, adding a warm ambience to the environment. Quality and craftsmanship are at the core of the Italian based Elite, To Be, which pays meticulous attention to fabrication and material.

Philippe has brought his vision to life with the unwavering love, passion and of his wife, Hannah. "We are incredibly happy with the final result," said Hannah, "It is the first thing people see from the street and they are drawn in for a closer look. It has become a real feature of our whole venue."

"I wanted a wine storage solution that was innovative and beautiful at the same time, the result is unique and draws customers inside from the streets"

– Philippe Gilbert, owner of Vini Divini Wine Lab

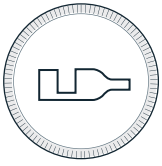




Living Edge Flagship Showroom, The Woolstores







Living Edge Flagship Showroom, The Woolstores.

Completed in 2015 by Woods Bagot, the flagship showroom of leading Australian furniture supplier and retailer Living Edge is located in Sydney's vibrant new commercial hub at Alexandria, and features a sophisticated bar area for client entertaining and events.

The Brief

By bringing commercial and retail operations together, Living Edge wanted to fully embrace the dual roles of host and living product showcase. The space needed to operate as a retail store, to demonstrate a range of architectural products in practice, and to accommodate various industry events and client entertaining.

The Solution

"The design aims to deliver an engaging experience for customers. The showroom is all about immersion, creating volumes of space and providing the opportunity for visitors to properly connect with Living Edge products," says Woods Bagot's Head of Interiors Todd Hammond.

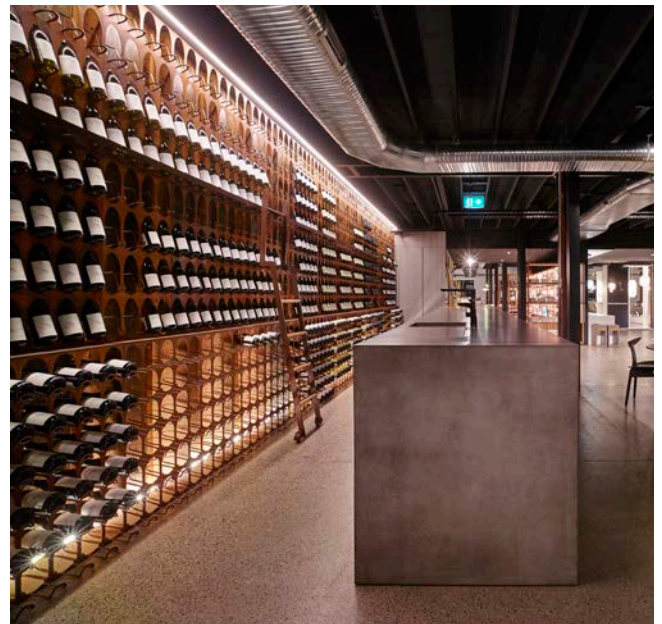
The heritage nature of the building was a key design consideration and a heritage consultant was engaged to ensure this was properly addressed. The translation between the historical structure and the new fit-out is a critical part of the concept.

An extensive Libreria Del Vino installation anchors the hospitality area and provides storage for over a thousand wine bottles. The depth and texture of hand finished corten was selected to complement the aged patina of the building's predominantly timber original structure. Combined with a formed concrete bar and polished concrete flooring, the result is a refined aesthetic that aligns with the Living Edge brand.

"Living Edge is a classic and understated brand, with a certain refined dignity. It was natural that the design aesthetically reflected that presence," says Todd.

*"Of all the features of our
award-winning Sydney flagship,
the corten wine library from
Elite, To Be is the most consistently
admired by visiting architects and
retail customers alike."*

– Aidan Mawhinney, Director of Living Edge

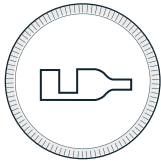






Living Edge Showroom, Perth





Case Study

Fleur Restaurant, Perth

Nestled within the grand, heritage-listed structure of The Royal in Perth WA, Fleur Restaurant is as bold as the design is delicate.

The 45-seat dining room and bar inside The Royal – nails the balance between relaxed and refined. The room is a mix of timeless and new, natural and human-made floral installations; and paintings of people with flowers bursting from their shirts chime with the restaurant's name.

The Solution

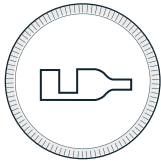
Living Edge was proud to provide a custom solution for wine storage, the Libreria del Vino that was perfectly matched for the client in a burnished steel finish, made entirely of laser-cut iron corten, acting as an impressive ceiling to floor backdrop, adding a warm ambience to the environment. Quality and craftsmanship are at the core of the Italian based Elite, To Be, which pays meticulous attention to fabrication and material.











Case Study

Glen Iris House, Melbourne

Beautiful Glen Iris with its rolling hills, tree-lined streets and vast homes is a picture-perfect snapshot of life in the suburbs. Glen Iris House introduces a sense of playful contemporary style into the interiors of a large family home in this Melbourne suburban paradise.

The Brief

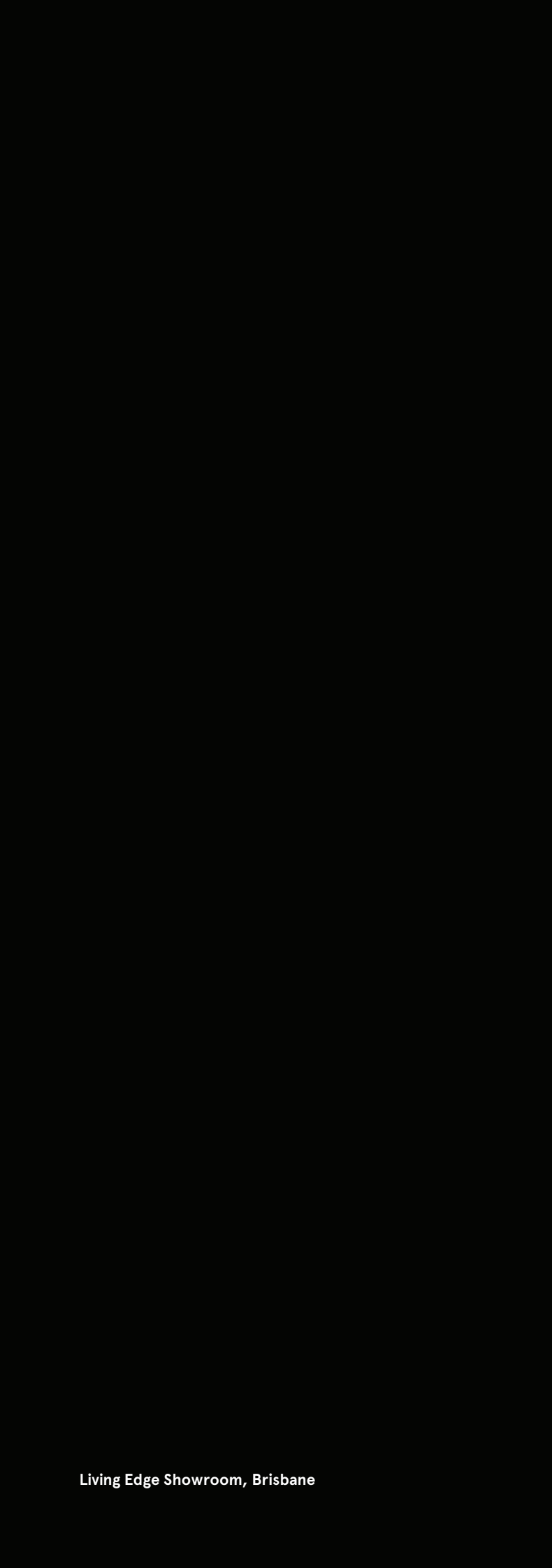
Living Edge's Melbourne Design Studio team was engaged by new homeowners Daryl & Luca, to bring new life to a 1940's brick front home with lofty rear extension in the quiet streets of Glen Iris. The owners also wanted to create a space to bring people together to celebrate the simple pleasures.

The Solution

A carefully considered approach to the refurbishment of the house has resulted in a home with enhanced functionality and performance, respectfully providing new life to the building's unique aesthetic.

Living Edge was excited to provide a custom home solution for wine storage, the Libreria del Vino from Italian brand Elite, to Be; perfectly matched for the multi-level entry space. Crafted of laser-cut iron corten, the custom storage unit acts as an impressive ceiling to second floor backdrop, adding a warm ambience to the home. Quality and craftsmanship are at the core of Living Edge and our design studio team paid meticulous attention to the fabrication and implementation of the piece.





Living Edge Showroom, Brisbane





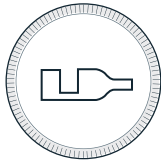
LOCAL SPIRITS



CHAMPAGNE & SPARKLING WINES







Case Study

Lotte Duty-Free, Sydney

As South Korea's biggest travel retailer, Lotte Duty Free, is ready to resume its plans for global growth, starting in Sydney, Australia where the company just recently opened its first store in the CBD. Covering more than 32,000 square feet and showcasing hundreds of high-end brands, the three-level store on the corner of Pitt Street and Market Street in the heart of Sydney's retail precinct has been designed to be a destination for travellers.

The new 'luxe' retail environment has been designed to enhance the shopping experience, providing a space where customers can interact with products at a higher standard. Across the three floors there will be approximately 70 beauty, jewellery, alcohol, fashion and watch brands and retail suites, including a whiskey bar and tasting area on level 1.

The Solution

Living Edge was proud to provide a custom solution for wine storage. As the largest installation of Libreria del Vino we have ever completed, it was perfectly matched for Lotte Duty Free's premium wine offering.

Complex yet sleek, rugged yet soft, the versatile Libreria del Vino, with cavities suitable for storing bottles of multiple sizes, is entirely derived from laser-cut iron and is available in a range of metal finishes. Proud owners of the Libreria del Vino are invited to combine the weathered patina of corten steel with the natural warmth of oak and suar to create a cosy atmosphere or choose from a range of powder coat finishes in shades derived directly from wine varietals. The powder coat finishes add different nuances to the iron frame, bringing character and colour to its environment, while the antique brass finish offers a classic, distinguished alternative that will patina with age.







Living Edge Showroom, Melbourne

Modular Bottle Rack Elements

Thanks to multiple modular configurations Libreria Del Vino provides space-saving wine storage for many wall dimensions.



F06

6 bottles vertically.

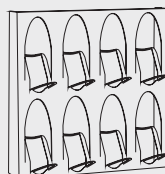
H 750 x W 250 x D 180mm
(D 120mm excluding holder)



F08a

8 bottles vertically.

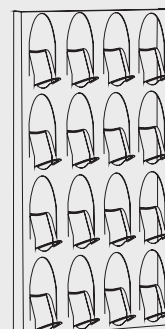
H 1000 x W 250 x D 180 mm
(D 120mm excluding holder)



F08b

8 bottles vertically.

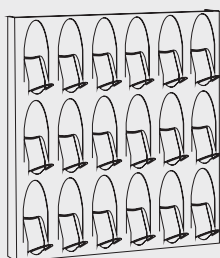
H 500 x W 500 x D 180 mm
(D 120mm excluding holder)



F16

16 bottles vertically.

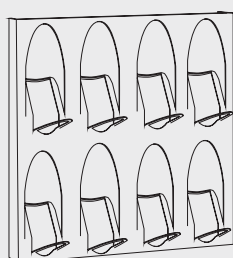
H 1000 x W 500 x D 180 mm
(D 120mm excluding holder)



F18

18 bottles vertically.

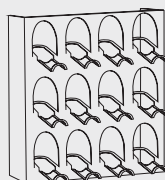
H 750 x W 750 x D 180mm
(D 120mm excluding holder)



M08

8 Magnum bottles vertically.

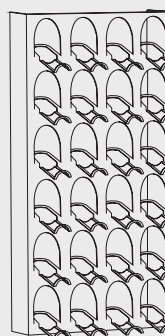
H 750 x W 750 x D 180 mm
(D 120mm excluding holder)



F12

12 bottles horizontally.

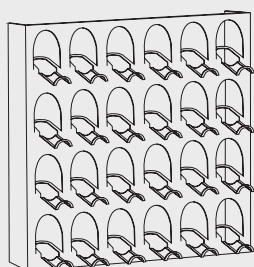
H 500 x W 500 x D 340mm
(D 240mm excluding holder)



F24a

24 bottles horizontally.

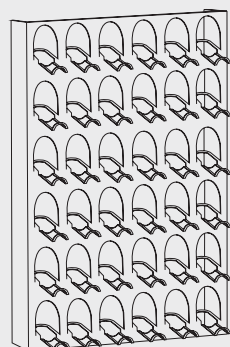
H 1000 x W 500 x D 340mm
(D 240mm excluding holder)



F24b

24 bottles horizontally.

H 750 x W 750 x D 340mm
(D 240mm excluding holder)



F36

36 bottles horizontally.

H 1000 x W 750 x D 340mm
(D 240mm excluding holder)



F01

Free standing metal bottle
rack for single bottle.

H 340 x W 180 x D 270mm



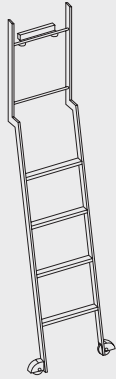
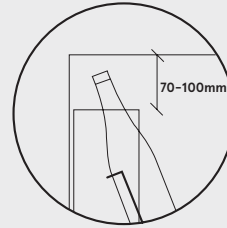
M01

Free standing metal bottle
rack for single Magnum bottle.

H 450 x W 240 x D 360mm

ATTENTION:

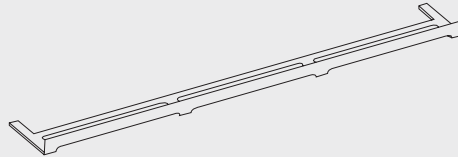
To allow the insertion of the bottles in the last row of the bottle racks, it is necessary to install the last element from 70mm to 100mm from the ceiling in relation to the height of the bottles to be inserted in the last row.



Ladder

Metal ladder with steps covered in wood.

H 2200 x W 400 x D 510mm



Track

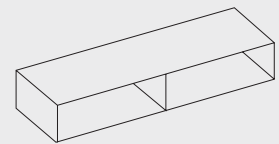
Mandatory installation on track to allow lateral movement.

BN100 H 60 x W 1000 x D 220mm

BN150 H 60 x W 1500 x D 220mm

BN225 H 60 x W 2250 x D 220mm

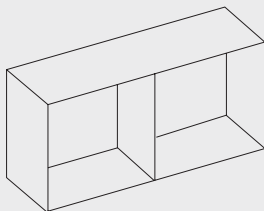
BN300 H 60 x W 3000 x D 220mm



M12

Hanging metal element, to be hung on the wall.

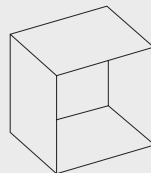
H 125 x W 750 x D 240mm



M24

Hanging metal element, to be hung on the wall.

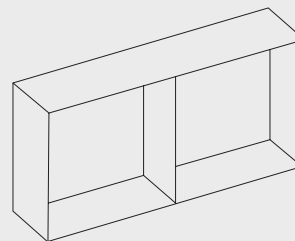
H 375 x W 750 x D 240mm



M37

Hanging metal element, to be hung on the wall.

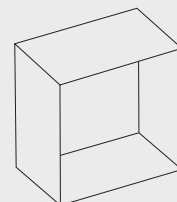
H 240 x W 500 x D 240 mm



M50

Hanging metal element, to be hung on the wall.

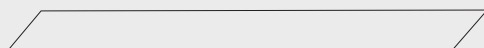
H 240 x W 750 x D 240 mm



M55

Hanging metal element, to be hung on the wall.

H 340 x W 180 x D 270mm



Metal Tops

Metal top to be used for bottle racks of different depths stacked on top of each other.

TP500 H 20 x W 500 x D 120mm

TP750 H 20 x W 750 x D 120mm

TP1000 H 20 x W 1000 x D 120mm

TP1500 H 20 x W 1500 x D 120mm



Metal Tops

Metal top for bottle racks depth 240 mm.

TP500P H 20 x W 500 x D 240mm

TP750P H 20 x W 750 x D 240mm

TP1000P H 20 x W 1000 x D 240mm

TP1500P H 20 x W 1500 x D 240mm

Materials

Combine the weathered patina of corten steel with the natural warmth of Oak or Suar (also known as Rain Tree) to create a cosy atmosphere, or choose from a range of powdercoated finishes in shades derived from wine varietals. Powdercoat adds different nuances to iron, bringing character and colour to its environment.

Antique brass offers a classic, distinguished alternative and will darken and patina with age.

With the addition of a timber frame, the system becomes an ideal room divider for lofts, penthouses or tasting rooms, making elegant and efficient use of unused space.

**Special colours are available by request.*

ETCHED FINISH



Corten CRA

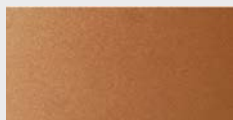


Bronzed BZA

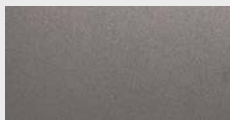


Burnished BRA

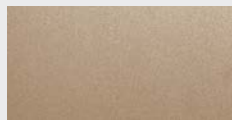
DIAMOND PAINT FINISH



Bronze BND



Nickel NKD



Brass OTD



Lead PBD

POWDER COAT FINISH



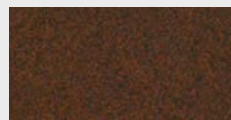
Anthracite ANP



Artic ARP



Ocean OCP



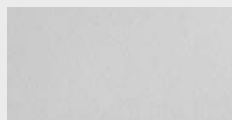
Corten CRP



Black NOP



Graphite GFP



White BOP



Bronze BNP

WOOD VENEERED



Natural Oak RVI



American Walnut NCI



Silver Oak RSI



NEW ZEALAND WINES

elite, TO BE

For further information please email
info@livingedge.com.au or call 1300 132 154

livingedge.com.au

living
edge®

CHAMPAGNE & SPARKLING WINES



CHAMPAGNE & SPARKLING WINES